

OFFICE FOR LEASE MATTHEWS, NC



10806 MONROE RD.
STE. B

Matthews, NC 28104

Premier Medical/Office Space available for lease October 1st, 2024. Ample parking and there are parking spaces directly in front of the this unit. 1,387SF, ground floor, walk in access with six offices and a large reception area, large ADA bathroom - see attached space plan. This unit offers lit signage at the front of the building for tenant's use and is located in the same building and contiguous to Covenant Pediatrics. This building was built in 2019. Showings by appointment only. 3yr minimum lease.

- Tenant Pays: Power/Gas/Phone
- Lease Rate: \$25.00 - \$26.75 psf
- Total SF Available: 1,387+-
- Parking: Ample



Phone

[704-877-5144](tel:704-877-5144)



Email

lynette@highlandrealtyltd.com





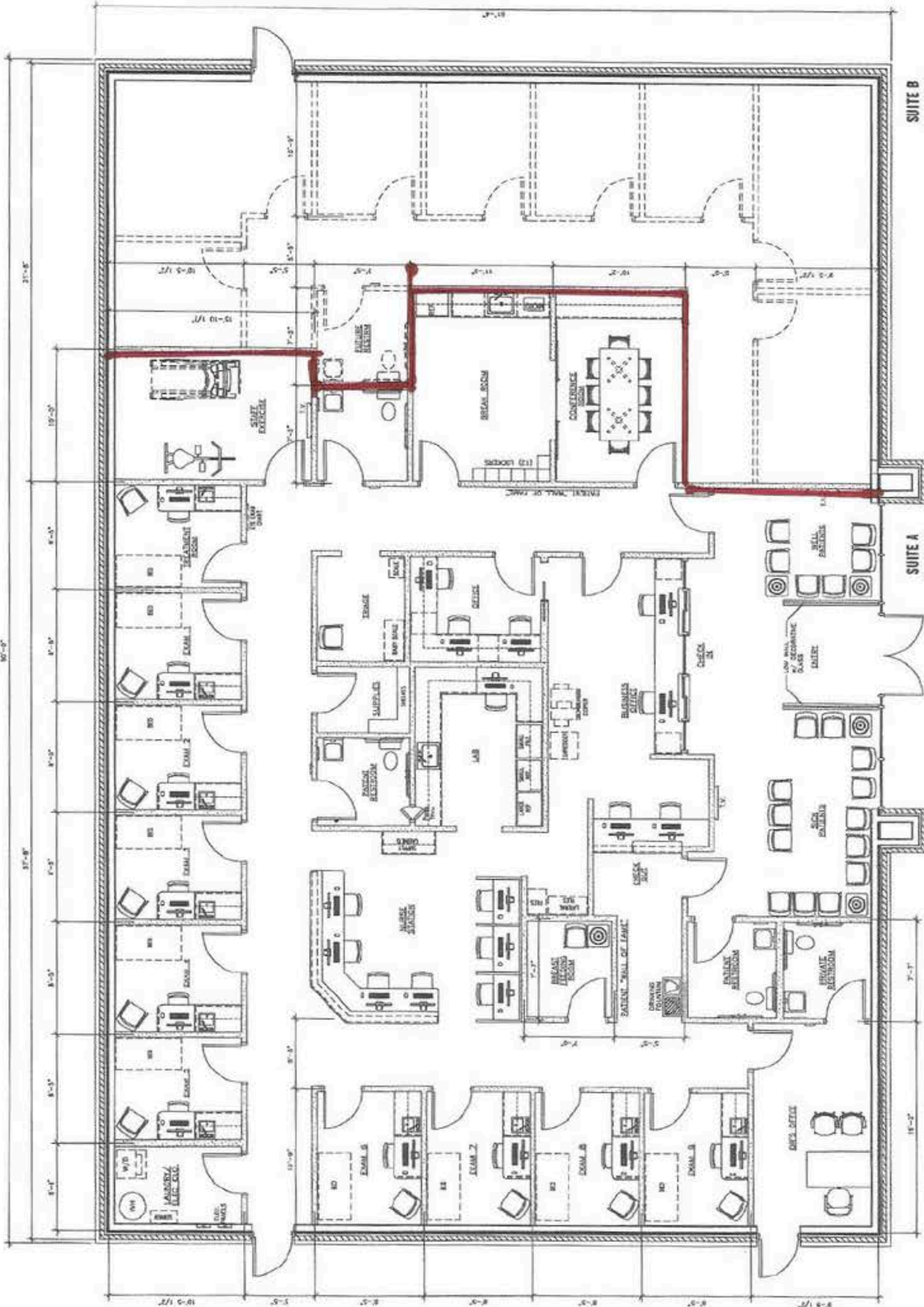
ARCHITECTURAL GROUP
 100 S. 10th St. Suite 200
 Raleigh, NC 27601-1111
 www.urbanarchitectural.com

Scale:

**COVENANT
 PEDIATRICS**
 New Construction

Mathews, NC 28105

Date:	April 12, 2018
Project Number:	2018-13
Issued For:	xx.xx.18
Construction Only:	xx.xx.18
FLOOR PLAN	
A1.1	
<small>© 2018 URBAN ARCHITECTURAL GROUP P.A. All Rights Reserved. No part of this document may be reproduced without written permission.</small>	



SUITE B
 1,387 S.F.

SUITE A
 4,033 S.F.

OPTION 2
01 PRELIMINARY FLOOR PLAN
 1/8" = 1'-0"

Suite B

Suite A

